

PEDDI NEWS

ISSUE 56 | 2017

NAFCO

AMERICAN STEEL FABRICATION



14 | CAUNTON ENGINEERING
ALWAYS ON POINT



20 | B&B IRONWORKS, INC.
A FAMILY OF FABRICATORS

Peddinghaus



20 | B&B IRONWORKS, INC. A FAMILY OF FABRICATORS

3 | REFERENCE POINT

Anton Peddinghaus - How To Build A Successful Team

4 | OUTFEED

FABTECH Chicago 2017

6 | NAFCO

American Steel Fabrication

10 | TECH SPOTLIGHT

PeddiBot-1200

12 | FMA

Fabtech 2017 & Industry 4.0

13 | GLOBAL NEWS

The Corey Brigade

14 | CAUNTON ENGINEERING

Always On Point

18 | STEELCODE

PeddiBot-1200 HMI

24 | REFLOW

Solid Shop Layouts

26 | GETTING TO KNOW

Steve Plakas – Check-Out Technician

28 | THROUGHPUT

CNC Solution Lines That Are Stronger Than Steel

30 | TOPPING OUT

Lyle Menke - Attacking Labor Issues Head On

ON THE COVER:

NAFCO newly completed project for NASA at the Marshall Space Flight Center. The rocket test stand consists of 4,500 tons of steel and stands 21 stories tall.



FABRICATOR SPOTLIGHT

B&B IRONWORKS

A Family of Fabricators

From Italy to Hoboken, New Jersey, Mauro Belgiovine began his business journey in 1982 with nothing more than a few tools and a small garage. As the President and Owner of B&B Iron Works, Inc., he earnestly gained his customer base by going door to door in the neighborhood in search of miscellaneous metalwork. Today, B&B is a leader in steel fabrication through quality and expertise in all of New Jersey and the New York Tri-State region.

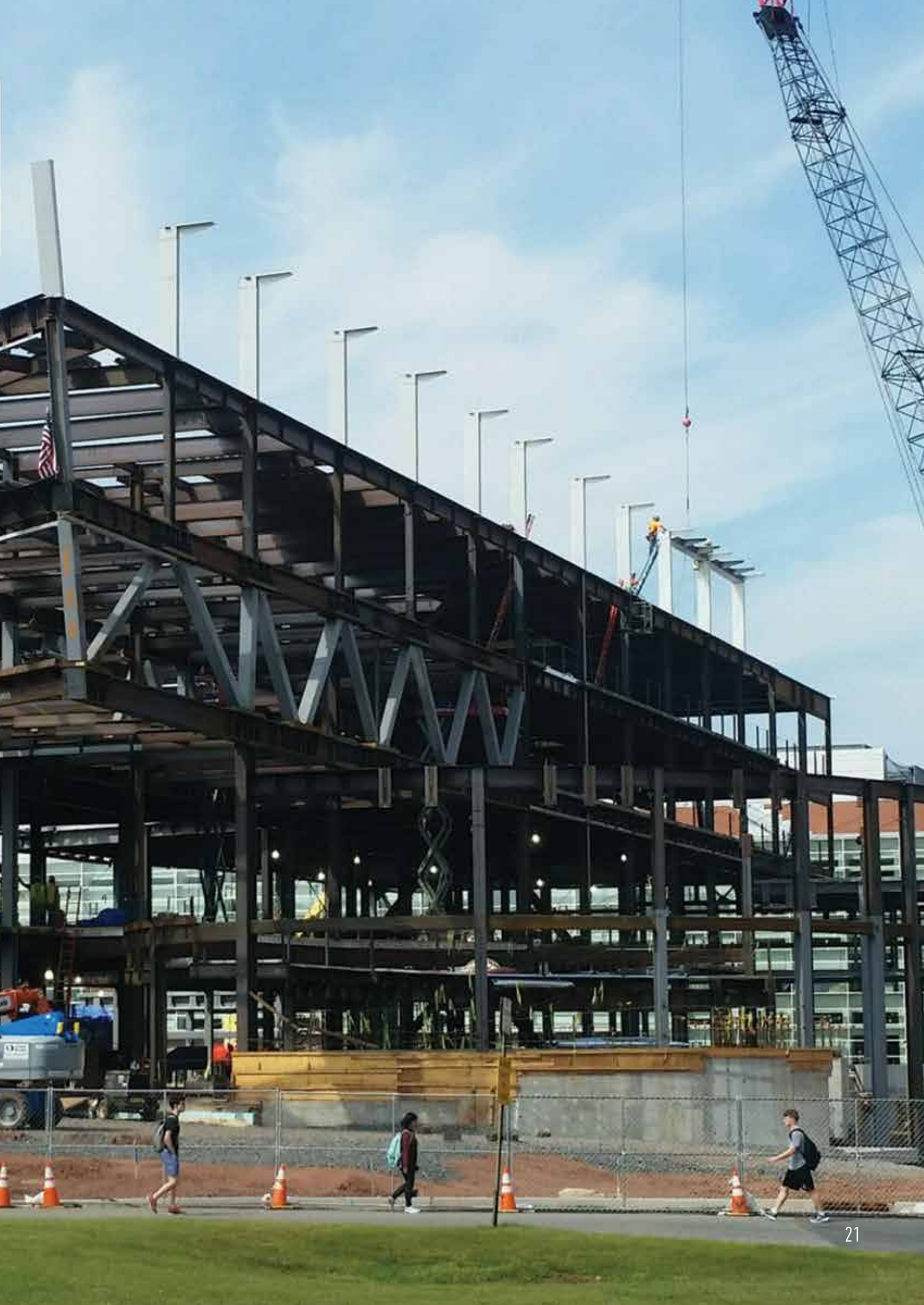
A Father-Son Trio

Working alongside Mauro are his two Vice President sons, Vincent and Anthony. Since Vincent's arrival, he has striven to make sure B&B keeps up with the fast-paced amount of work in the area. With the help of his brother Anthony, they continue to keep the shop streamlined and at its full capacity. Anthony explains, "Being a family business, we're always at work even when we're at home." Sunday family dinners not only consist of great conversation and laughter, but also production plans for the upcoming week.

As a company that firmly believes their workers are the key to their success, even employees who are not family, are still treated as such. A significant amount of B&B's employees have been with the company for decades, since the very beginning. Mauro never lets his employees forget that he cherishes their level of knowledge, skill and work ethic.

"Well I think one of the strongest elements in any family business is the pride that you take in your work. You know it's more than just a job, it's also a part of your family's legacy." Vincent says with a smile, "I think it's also helped our employees feel like they're part of the family too since we've kept such a lean structure over the years."







Nonstop Progression Through CNC

Mauro's humble beginnings, hard work and exceptional determination in Hoboken led to B&B's expansion to a larger facility in Irvington, New Jersey in 2000, with the help of CNC technology of course. Here, B&B purchased their first Peddinghaus machine, an Anglemaster-623. Vincent expresses, "Since then it's been one machine after the other, we've really seen the value in Peddinghaus equipment." Later on in 2014, B&B moved into their current 70,000 square foot state-of-the-art facility in Clifton, New Jersey. Here, they are able to take on fabrication, design, detailing, painting and erection. Along

with the move came the purchase of their drill saw tandem system, the Advantage-2 and DG-1100. "We pretty much hit the ground running as soon as we moved into this facility." Vincent declares, "I would say capacity tripled overnight."

B&B's most recent purchase, the HSFDB-C high speed plate processor, has immensely contributed to company growth. Processes like beveling which the employees used to do by hand, have been entirely revolutionized. Anthony confirms, "You can program a bevel at any angle and the machine is always perfect." The HSFDB-C at B&B has completely eliminated

the need for grinding after beveling, and has more than doubled their plate production. As Vincent would say, the plate line has been "just a dream".

Vincent continues on, "I would say the best feature about the beveling on the HSFDB-C is the precision. Prior to this we were cutting all our plates either with a saw or most likely by hand with a torch. Not only was that very imprecise but also we had to grind and clean spending hours smoothing out those surfaces before they could be properly prepped for welding. The machine not only can perform all the beveling precisely and nest multiple parts together to



IN FOCUS | B&B IRONWORKS, INC.

SPREAD: B&B Iron Works Inc. project for Rutgers University, The Richard Weeks Hall of Engineering

LEFT: Connecting the massive pieces to the Rutgers project

TOP RIGHT: Vincent Belgiovine (Vice President), Mauro Belgiovine (President), Anthony Belgiovine (Vice President) and Gesiel Oliveira (Plant Manager)

BOTTOM RIGHT: B&B's HSFDB-C plate line bevels clean parts for their production



save time, but it also completely eliminates the grinding and cleaning afterwards.”

In addition to their plate processor, drill lines, and anglemaster, B&B has invested in an impeccable army of Peddinghaus machines. Completing the shop, a PeddiWriter layout marking machine that keeps the welders more than busy. Vincent verifies, “Our capacity is 3,000 to 5,000 tons per project, and 10,000 tons annually.”

B&B Puts Peddinghaus to the Test

Rutgers University had big ideas in mind for their new building on campus, the Richard Weeks Hall of Engineering. The building's innovative

design posed a challenge for B&B that they were able to take on confidently. Consisting of two 70-ton trusses at 130 feet (40 M) long each, curved 3D pipe trusses, curved building facades and sloping columns, it is safe to say B&B put their skill and their Peddinghaus machinery to the ultimate test. Mauro insists, “Nothing was straight on the project, everything was skewed and round. Even so, Rutgers said that it was the first project they've ever had completed ahead of schedule.”

Giving Back to the Community

Mauro's passion for helping those around him has led the company to do wonderful things through the Inter Club in New Jersey. Inter Club is a

non-profit organization associated with Inter Milan, Mauro's favorite Italy-based soccer team. Inter Club frequently donates to many local charities as well as to Inter Campus, a worldwide organization that supports families and children by taking kids off the streets around the world and teaching them to play soccer. Each year, B&B proudly supports a charity event for the foundation. “Let me tell you, it's the greatest feeling you can have.” Mauro emphasizes, “Fortunately some of us are lucky enough that we can donate, and we'll do it as much as we can. There's nothing better than helping kids.” ■